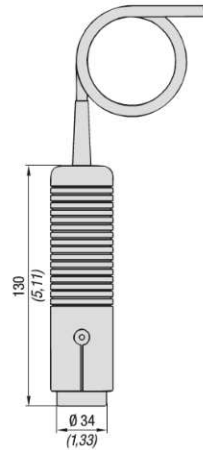
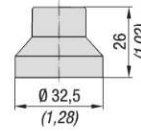


Rotational Speed Sensor - Type PPC-04/12-SDS-CAB

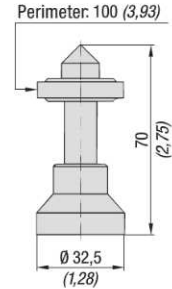
B



PPC-04/12-SDS-CAB



PPC-04/12-SFA-Focus Adaptor



PPC-04/12-SKA-Contact Adaptor

Product Description

The PPC-04/12-SDS-CAB Rotational Speed Sensor allows non-contact speed measurement of rotating components. The sensor is based on an opto-electrical measurement principle that determines the rotational speed with high-accuracy using a reflecting strip on the shaft.

The contact rotational speed measurement is obtained by using a Contact Adaptor that is mounted to the sensor, and which makes contact with the rotating component during measurement.

This also produces high-accuracy measurement results. In the case of especially small areas, using the focusing adaptor facilities measurement.

Note: The analogue Rotational Speed Sensor PPC-04/12-SDS-CAB can only be used with analogue Hydraulic Testers.

Technical Data

- Material: ABS
- Weight: 230 g / .51 lbs
- 5-pin connection
- Both contacting and non-contacting measurement possible
- Type of measurement: optical, red LED

Ambient Conditions

- Ambient temperature: 0°C ... +70°C / +32°F ... +158°F

Measuring Range

- Measuring range: 20 ... 10000 1/min
- Measuring distance: 25 ... 500 mm (1 ... 20 in)
- Measuring angle: ±45 °C
- Accuracy: ≤ ±0,5 % FS*
- Resolution: ±5 1/min

Electrical Data

- Output signal: 0 ... 3 V DC
- Input signal: 7 ...12 V DC

Note: We recommended not extending the 2 m / 6.56 ft permanent cable connection provided on the sensor!

Applications Examples

Fig. 1 - Contacting rotational speed measurement with the contact adaptor

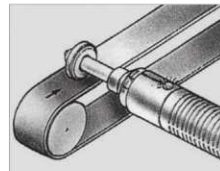


Fig. 2 - End face rotational speed measurement with the contact adaptor

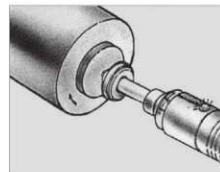
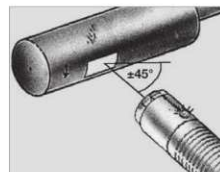


Fig. 3 - Rotating shaft / non-contacting rotational speed measurement using the focusing adaptor and marking strip



Order Codes



① Series and Type	Rotational Speed Sensor	PPC-04/12-SDS-CAB
② Calibration	Without calibration certificate	(none)
	With calibration certificate	CAL

Order Codes

Focus Adaptor



① Series and Type	Focus Adaptor	PPC-04/12-SFA-focus
-------------------	---------------	---------------------

Contact Adaptor



① Series and Type	Contact Adaptor	PPC-04/12-SKA-contact
-------------------	-----------------	-----------------------

Dimensional drawings: All dimensions in mm (in).

